



Acme Sanitary Ware Co Ltd

Acme Building, 22-28 Nanking Street, Kowloon, Hong Kong


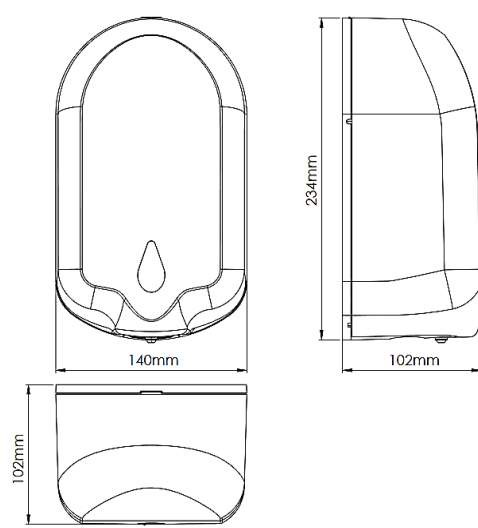
Tel: 2388 7171 Fax: 2710 8012

E-mail: acme@acmesanitary.com.hk

Website: www.acmesanitaryware.com.hk

PROJECT		REF		REV	ITEM CODE	
LOCATION		DATE			PAGE	

SANITARY WARE SPECIFICATION SHEET

Item Descriptions	Mediclinics (Spain) ABS plastic wall-mounted automatic liquid soap dispenser in white finish DC supply	<div>Illustration/ Drawing</div> <div></div>														
Dimensions	L140 x W102 x H234 mm															
Model	DJ0050A															
Material/ Finish	ABS Plastic / White Finish															
Manufacturer	Mediclinics, S.A. (Spain)															
Supplier	Acme Sanitary Ware Co. Ltd Mr. Eric Wong/ Mr. Don Yuen	<div></div>														
Contact Tel/Fax	(852) 2388-7171 / (852) 2710-8012															
E-mail	acme@acmesanitary.com.hk															
Website	www.acmesanitary.com.hk															
General Description <ul style="list-style-type: none">· Touch-free wall-mounted liquid soap or hand sanitizer dispenser of 1.2 L capacity, manufactured in high impact ABS plastic.· Touchless operation to reduce cross-contamination and the spread of germs.· Smart and trendy design that allows this soap dispenser to blend into any space perfectly.· Perfect to use at bathrooms, kitchens, offices, schools, banks, hospitals, hotels and restaurants.· Liquid level display window located at the front part of the dispenser to help monitoring the liquid content.· Provided with a safety lock with a special key to help prevent tampering and vandalism and to avoid soap robbery in public places, at the same time that hygiene is guaranteed.· Suitable for liquid soap or hand sanitizing.· It is recommended to use liquid soap or hand sanitizer with the following characteristics:<ul style="list-style-type: none">-Maximum alcohol content of 80%-Density between 0.9 and 1.35 kg / dm3-Viscosity between 500 and 2,500 cps.· It does not support soaps that contain methanol, chlorine or solid or abrasive particles.· Screws and plastic plugs to mount on a brick wall supplied.																
		Technical specifications <table><tr><td>Dimensions</td><td>236 x 144 x 106 mm</td></tr><tr><td>Capacity</td><td>1.2 L</td></tr><tr><td>Cover</td><td>3.0 mm</td></tr><tr><td>Base plate thickness</td><td>2.8 mm</td></tr><tr><td>Inner Tank Thickness</td><td>1.5 mm</td></tr><tr><td>Net weight</td><td>0.7 Kg</td></tr><tr><td>Quantity dispensed per pump</td><td>1.2 ml</td></tr></table>	Dimensions	236 x 144 x 106 mm	Capacity	1.2 L	Cover	3.0 mm	Base plate thickness	2.8 mm	Inner Tank Thickness	1.5 mm	Net weight	0.7 Kg	Quantity dispensed per pump	1.2 ml
Dimensions	236 x 144 x 106 mm															
Capacity	1.2 L															
Cover	3.0 mm															
Base plate thickness	2.8 mm															
Inner Tank Thickness	1.5 mm															
Net weight	0.7 Kg															
Quantity dispensed per pump	1.2 ml															

Note:



* All information of the above is for the reference only. No prior notice is made if any changes.

Source: Mediclinics, S.A.



Acme Sanitary Ware Co Ltd

Acme Building, 22-28 Nanking Street, Kowloon, Hong Kong
Tel: 2388 7171 Fax: 2710 8012
E-mail: acme@acmesanitary.com.hk
Website: www.acmesanitaryware.com.hk

PROJECT		REF		REV	ITEM CODE	
LOCATION		DATE			PAGE	

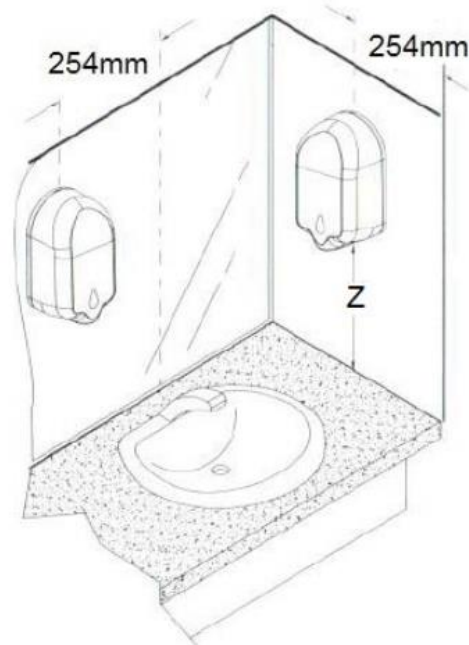
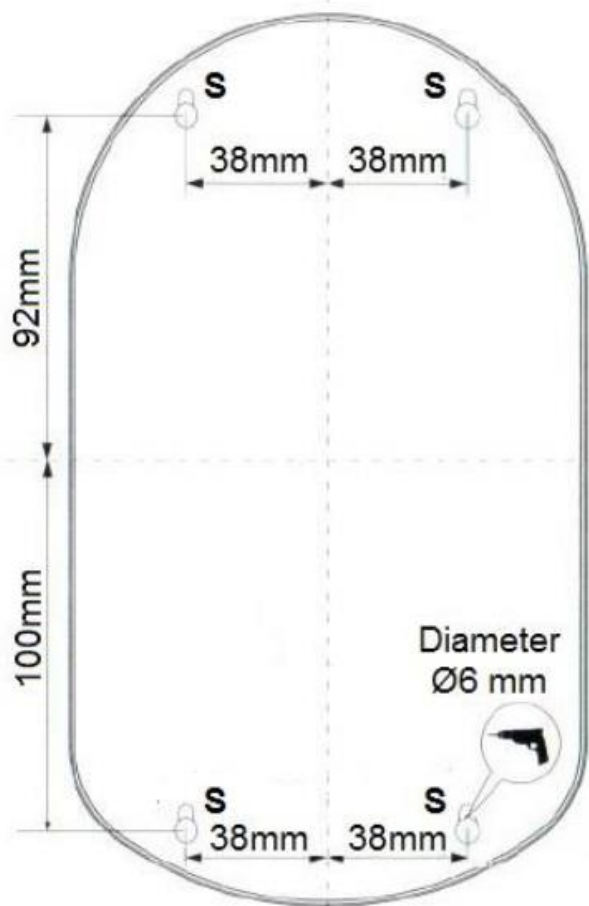
SANITARY WARE SPECIFICATION SHEET

Components & materials

- **COVER:** made of high impact ABS plastic, 3.0 mm thick and with a level display window. Opening on top thanks to a safety lock with a provided special key.
- **WALL PLATE:** made of ABS plastic, 2.8 mm thick. It is mounted on the wall by means of four M4 stainless steel screws (provided) with their corresponding Ø 6mm plastic plugs (also provided).
- **INNER PLASTIC TANK:** made of plastic material, 1.5 mm thick.
- **INFRA-RED DETECTION:** with a 3-10cm hands detection range.
- **VALVE:** anti-drip corrosion resistant that dispenses 1.2ml of soap per service.
- **POWER:** DC 6V thanks to 4 AA LR6 alkaline batteries (**not provided**).

Mounting Template

Fix the soap dispenser through the holes of the wall and floor plates, using the stainless steel screws supplied and taking into account the distances of the points indicated by an "S" in the next figure:



"Z" Minimum distance

Z > 200mm for a normal countertop

Z > 300mm for a stainless steel countertop

VERY IMPORTANT:

Do not install this soap dispenser inside the shower, as its electrical components can be seriously damaged by water and the dispenser stops working. If you choose the configuration with an electric converter, install it away from any source of water.

Note:

* All information of the above is for the reference only. No prior notice is made if any changes.



Source: Mediclinics, S.A.



Acme Sanitary Ware Co Ltd

Acme Building, 22-28 Nanking Street, Kowloon, Hong Kong
 Tel: 2388 7171 Fax: 2710 8012
 E-mail: acme@acmesanitary.com.hk
 Website: www.acmesanitaryware.com.hk

PROJECT		REF		REV	ITEM CODE	
LOCATION		DATE			PAGE	

SANITARY WARE SPECIFICATION SHEET

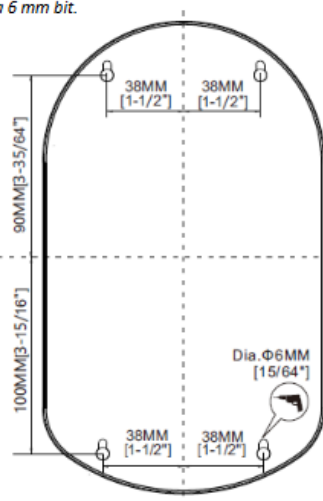
Installation

Drill the wall using the provided mounting template and a 6 mm bit.

See right pictures

- 1 – Open the cover using the provided key
- 2 – Remove the cover according to the picture
- 3 – Firmly screw the unit to the wall (screw bag included)
- 4 – Install the batteries (4 alkaline batteries AA/LR06) according to the shown polarity
- 5 – Fill the tank with soap or sanitizer
- 6 – Assembly the cover according to the picture
- 7 – Close the cover, the dispenser powers on automatically

IMPORTANT - For the first time use or long time no use, please active the sensor by hand around 5 times in order to prime de circuit



Automatic Soap Dispenser Instructions


Before installation

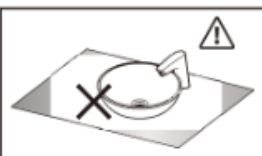
Look for a clean and smooth surface to install the Soap Dispenser

Keep at least 25cm of free space below the unit. Avoid high reflective objects in order to avoid faulty function of the presence sensor.

ATTENTION: Check operation of unit while holding in place by hand BEFORE permanent installation

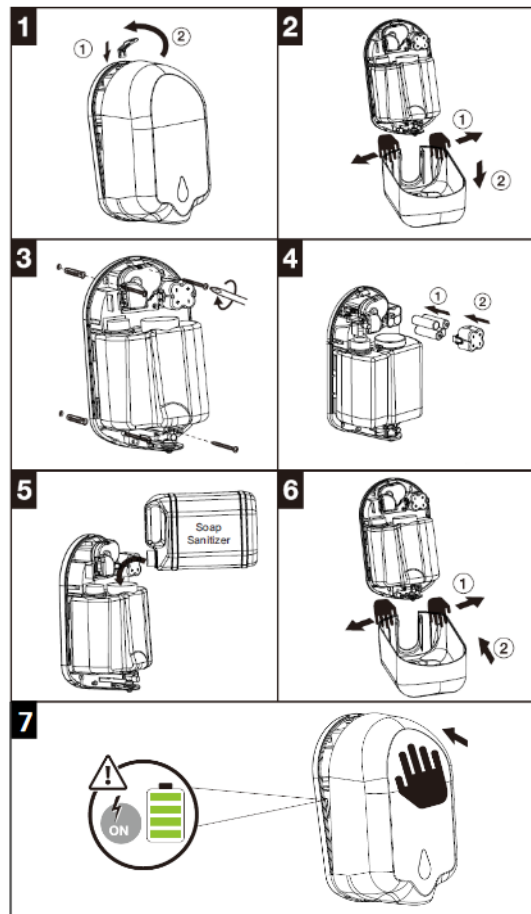
Specifications

Body material	>ABS<
Dimensions	234 x 140 x 102 mm
Soap Tank Capacity	1200 ml
Battery	6 x Alkaline AA/LR6 (1.5V)
Room Temperature	+5°C – +40°C
Dispensed soap quantity	1,2 ml
Suggested viscosity (liquid-gel)	500-2500 cP
Density	0,9 – 1,35 kg/dm ³
Max. Alcohol content	80%
MEDICLINICS, S.A. Industria, 54 E-08025 BARCELONA SPAIN	
Do not use products with	methanol, chlorine nor abrasive particles



Trouble shooting

SYMPTOM	CORRECTIVE ACTION
No soap/sanitizer dispensed on hands	Check soap qualities, properties and level in soap/sanitizer tank. Check sensor cover for dirt obscuring the lens. Check battery charge level. Check spout nozzle, soap dispensing tube for clogs. Check if the ON/OFF lever [Installation "7"] at right location. Check if the soap tank locates at right hanging bracket [Installation "3"]. Active the dispenser sensor several times for the first time use or long time no use the dispenser. Some soap [Sanitizer] is blocked the pipe if lone time without use the dispenser.
Low volume soap dispensed	Remove soap tank & wash out spout nozzle, clean dispense tube by water. Check if the tube is loose without cross-threaded.
Soap leaks	Check if the soap tank leakage. Check if dispense tube connection loose. Check disposable soap pump for defects and/or replace.



Maintenance



Note:

* All information of the above is for the reference only. No prior notice is made if any changes.

Source: Mediclinics, S.A.

